

# Electronic semi-parallel ignitor for HID lamp circuits

SN 58 T15

HID ignitors for semi-parallel systems



## Product data

### • General Information

Application Code 58 T15

### • Operating and Electrical

Input Voltage 220 to 240 V  
Input Frequency 50 to 60 Hz  
Igniton Type Semi-Parallel  
Ignition Time (Max) 18 s  
Ignition Time (Min) 12 s  
Ignition Time (Nom) 15 s  
Ignition Voltage 5.0 kV  
(Max)  
Ignition Voltage (Min) 2.8 kV  
Response Voltage 195 V  
Mains Voltage -8%+6%  
Performance (AC)  
Mains Voltage Safety -10%+10%  
(AC)  
Power Losses (Nom) 1 W

### • Wiring

Ballast Contact Wire 0.50-2.50 mm<sup>2</sup>  
Cross Section  
Connector Type Screw

### • Temperature

T-Ambient (Max) 75 °C  
T-Ambient (Min) -20 °C  
T-Case Maximum (Max) 80 °C

### • Mechanical and Housing

Housing AKULONS223

### • Approval and Application

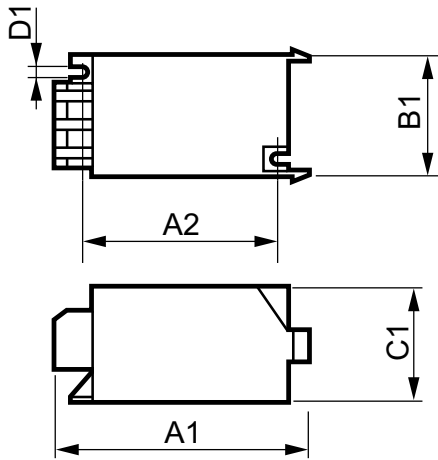
Approval Marks CE marking  
ENEC certificate

### • Product Data

Full product code 87101630333400  
Order product name SN 58 T15  
EAN/UPC - Product 8710163148588  
Order code 913710010414  
Numerator - Quantity Per Pack 1  
Numerator - Packs per outer box 48  
Material Nr. (12NC) 913710010414  
Net Weight (Piece) 0.049 kg

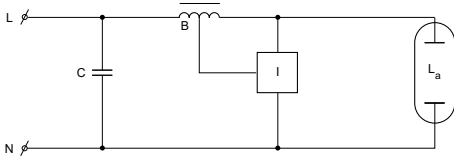
# PHILIPS

## Dimensional drawing



### SN 58 T15

Product	C1	A1	A2	B1
SN 58 T15	38.5 mm	85.5 mm	65.0 mm	41.5 mm



© 2015 Philips Lighting Holding B.V.  
All rights reserved.

Specifications are subject to change without notice. Trademarks are the property of Koninklijke Philips N.V. (Royal Philips) or their respective owners.

[www.philips.com/lighting](http://www.philips.com/lighting)

2015, November 29  
data subject to change